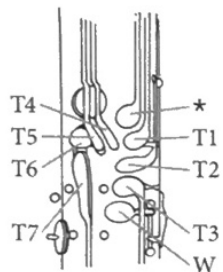


# Bassoon Fingering Chart

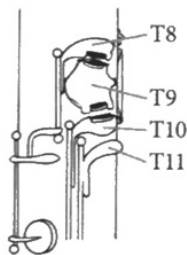
- = open
- = pressed down
- W = whisper key
- h.h. = half hole
- T = thumb key
- L = left finger key
- R = right finger key

When more than one fingering is shown, the first is the most commonly used. The additional fingerings, known as **alternate fingerings**, are used in certain situations to allow for better technique.

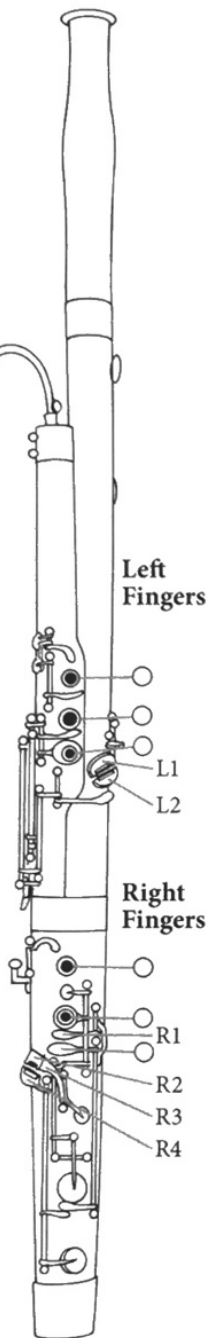
## Left Thumb



## Right Thumb



\* Some bassoons may not have this key.



A# Bb	B Cb	B# C	C# Db	D	D# Eb
T4 ● T5 ● T6 ● T7 ● T9 ● R2 ●	T5 ● T6 ● T7 ● T9 ● R2 ●	T6 ● T7 ● T9 ● R2 ●	T6 ● T7 ● L2 T9 ● R2 ●	T7 ● T9 ● R2 ●	T7 ● L1 T9 ● R2 ●

E Fb	E# F	F# Gb	G	G# Ab	A
T9 ● R2 ●	W ● R2 ●	W ● or W ● T10 ● R3 ●	W ● R2 ●	W ● or W ● R4 ● T11 ●	W ● R2 ●

A# Bb	B Cb	B# C	C# Db	D	D# Eb
W ● or W ● T8 ● R1 ●	W ● R1 ●	W ● R1 ●	T3 ● T7 ● W ● R2 ●	W ● R2 ●	W ● or W ● R2 ● R3 ●

E Fb	E# F	F# Gb	G	G# Ab	A	A# Bb	B Cb
W ● R2 ●	W ● R2 ●	W ● h.h.* or W ● h.h.* T10 ● T11 ● R3 ●	W ● h.h. L1 ●	W ● h.h.** or W ● h.h.** R4 ● T11 ●	W ● R2 ●	T8 ● or R1 ● R1 ●	W ● R2 ●

\*h.h. slightly more open

\*\*h.h. slightly less open

B# C	C# Db	D	D# Eb	E Fb	E# F	F# Gb	G
T3 ● R2 ●	T3 ● or T7 ● R2 ●	* ● R2 ●	● or ● R2 ●	● or ● L1 ● R2 ●	● L1 ● R2 ●	○ or T8 ● L1 ● R2 ●	W ● h.h. L1 ● R2 ●